

Stereotype Congruency in Credibility Assessments of Sexual Minority Asylum Claims

Queer Methodologies, Malmö
2025-11-24

Malin Ekelund

Doctoral Researcher

Department of Psychology

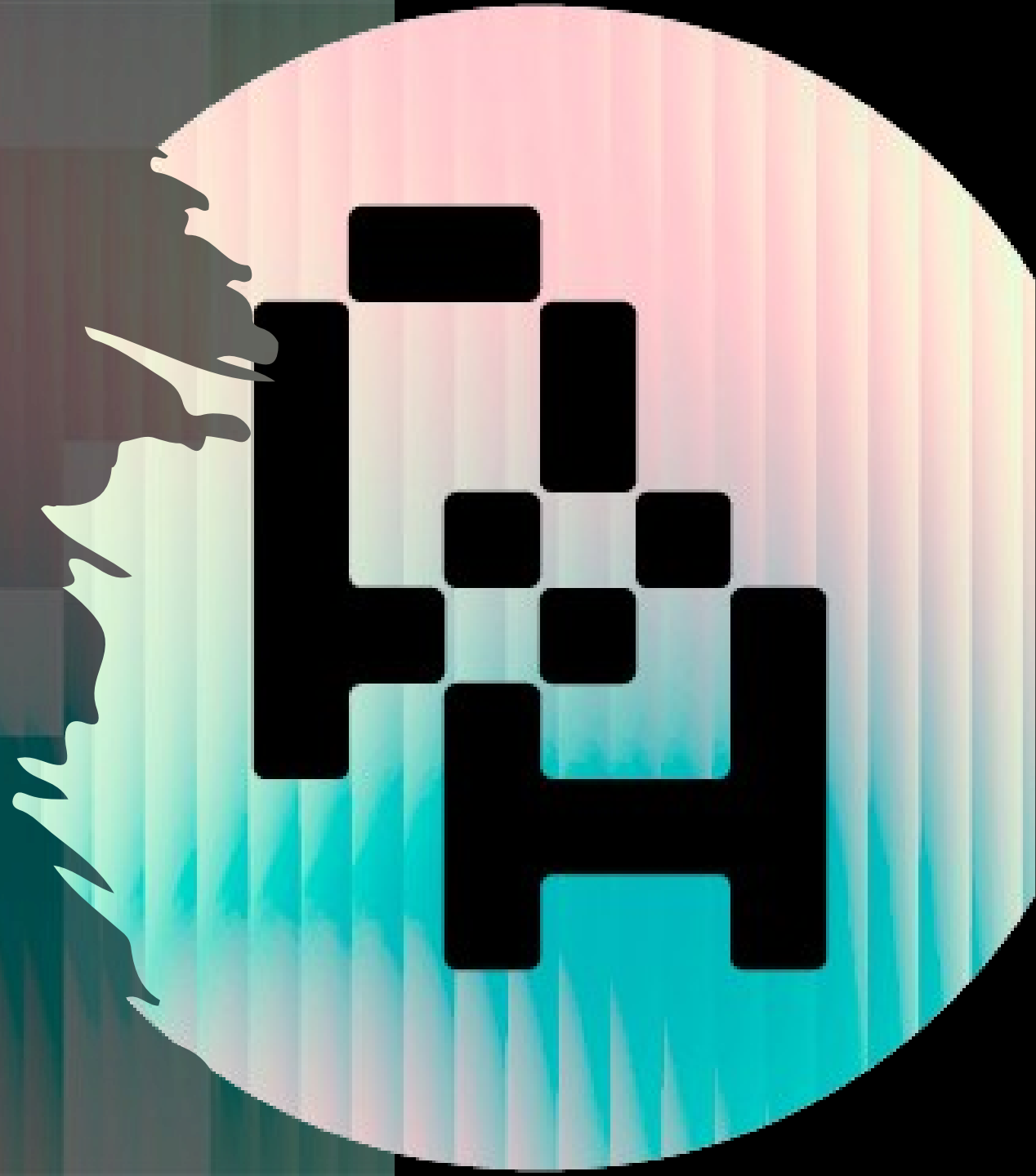
Åbo Akademi University

Supervisors: Jan Antfolk, Jenny Skrifvars, Hedayat Selim



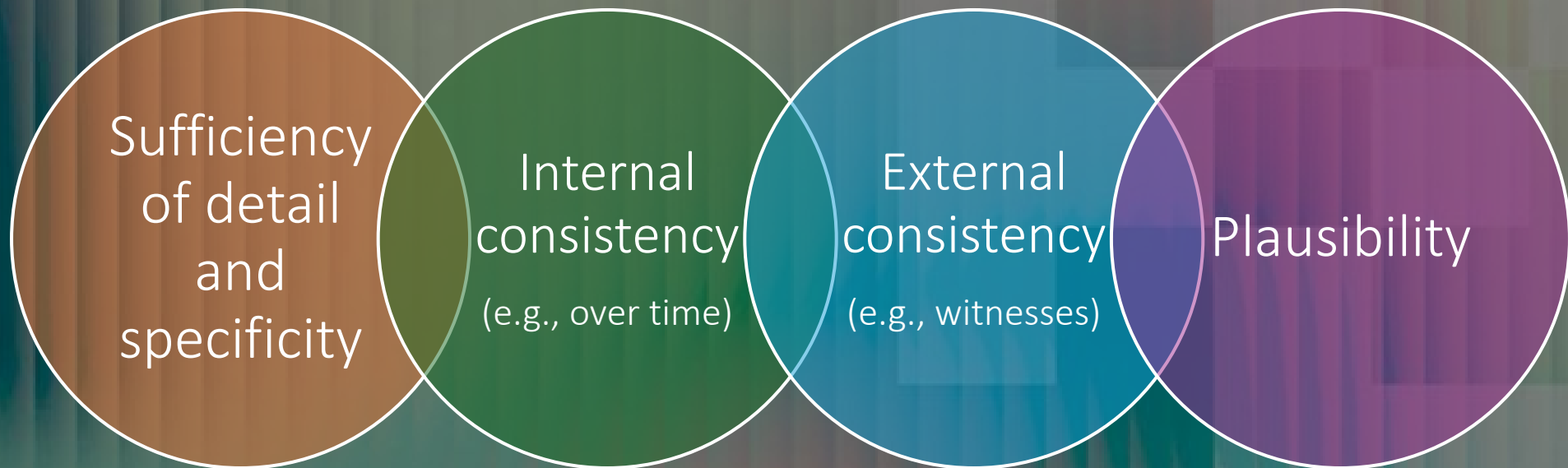
Psychology at the Frontiers: Asylum Interviewing and Decision Making [Psych-AID]

- Our overall aim is to explore ways to develop the interview procedure and the credibility assessments to ensure fair and accurate asylum procedures.
- <https://sites.abo.fi/psych-aid/>



Credibility assessment

The UNHCR recommends using 4 credibility indicators:





**”Is this person a
'genuine' sexual or
gender identity
minority applicant?”**

Preprint

Private file

An Experimental Test of Stereotype Congruency in Credibility Assessments of Sexual Minority Asylum Claims

September 2025

DOI: [10.31234/osf.io/acwp3_v1](https://doi.org/10.31234/osf.io/acwp3_v1)

License · [CC BY 4.0](https://creativecommons.org/licenses/by/4.0/)

Lab: [Jan Antfolk's Lab](#)



Malin Ekelund ·



Jenny Skrifvars ·



Hedayat Selim ·



Jan Antfolk

Preprints and early-stage research may not have been peer reviewed yet.

Main hypothesis

1. stereotype hypothesis: SOGI asylum seekers who fit stereotypes = judged more credible.

Specifically, we expected feminine-presenting gay men and masculine-presenting lesbians to be rated as more credible than their gender-conforming counterparts.

Stereotypes: mechanisms and individual factors

Asylum seekers:
Warmth,
competence,
moral character

Participants:
Social
dominance
orientation (SDO)

How stereotypes shape credibility judgments

Hypothesis 2a — Trait perception:

Warmth, competence, and especially moral character predict credibility.

Hypothesis 2b — Mediation:

These traits may explain *why* stereotypes affect credibility.

Hypothesis 3 — Individual differences (SDO):

People more comfortable with inequality rely more on stereotypes.

Participants and procedure

- 383 participants from the UK from Prolific, an online platform
- Acted as mock asylum officials
- Made a credibility assessment of one SOGIE asylum seeker
- Rated the asylum seeker on perceived warmth, competence, and moral character
- Their own beliefs about group hierarchies (SDO)

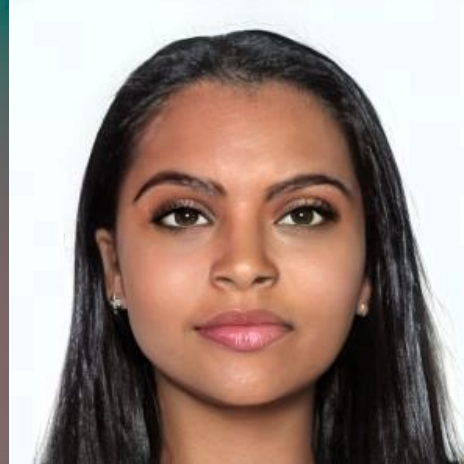
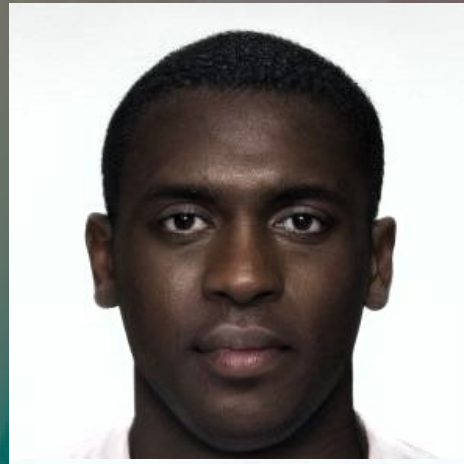
Experimental design

Sexual orientation	Stereotypical	Not stereotypical	Regions
Gay men	Feminine gay man	Masculine gay man	Middle East
	Feminine gay man	Masculine gay man	Latin America
	Feminine gay man	Masculine gay man	Africa
Lesbians	Masculine lesbian	Feminine lesbian	Middle East
	Masculine lesbian	Feminine lesbian	Latin America
	Masculine lesbian	Feminine lesbian	Africa

= 12 different conditions

AI-manipulated pictures

Sexual orientation	Stereotypical	Not stereotypical	Regions
Gay men	Feminine gay man	Masculine gay man	Africa
Lesbian	Masculine lesbian	Feminine lesbian	Latin America



Casefile excerpt

At his asylum interview, D testified as to the following:

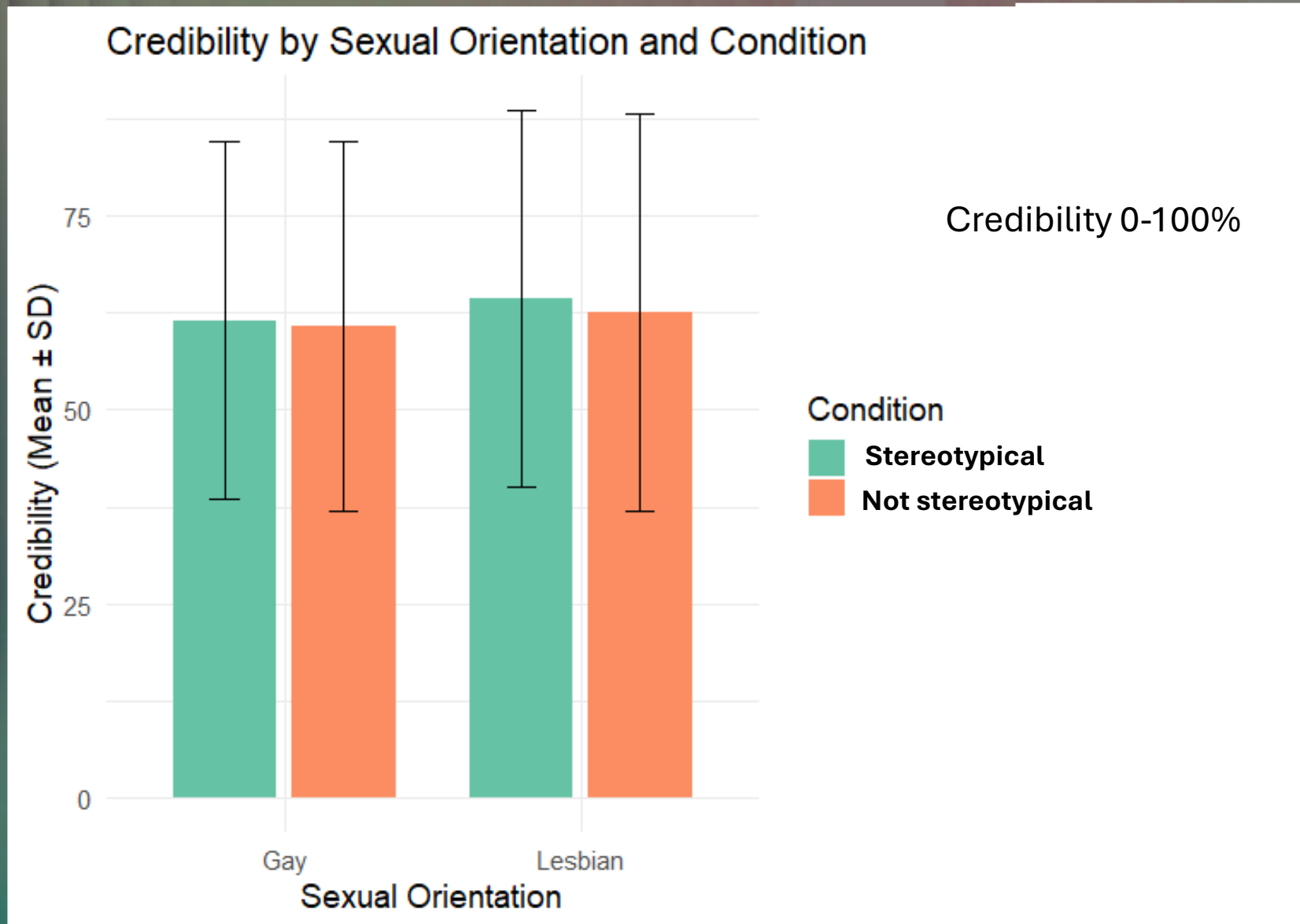
He grew up in a small town in a Middle Eastern country. He always felt different from other boys, even as a young child. He preferred playing with girls. He recalls first being sexually attracted to other boys starting around age 12, but he was too scared to act on those feelings. When he was 17, he was approached by an older boy in the neighborhood, who was rumored to be gay. They had a sexual relationship in secret, which continued on and off for about four months. D's mother became suspicious and confronted him and D admitted that he thought he was gay. The mother responded that she was not surprised and had always suspected this. She told D that he must be careful and hide this while he lived at home - especially from his father, a senior police officer who scorned homosexuals. She told him that maybe things could be different when he left their town for university. He broke off his secret relationship and even agreed to date a female friend of his cousin - though that did not last long.

Same casefile for all 12 conditions

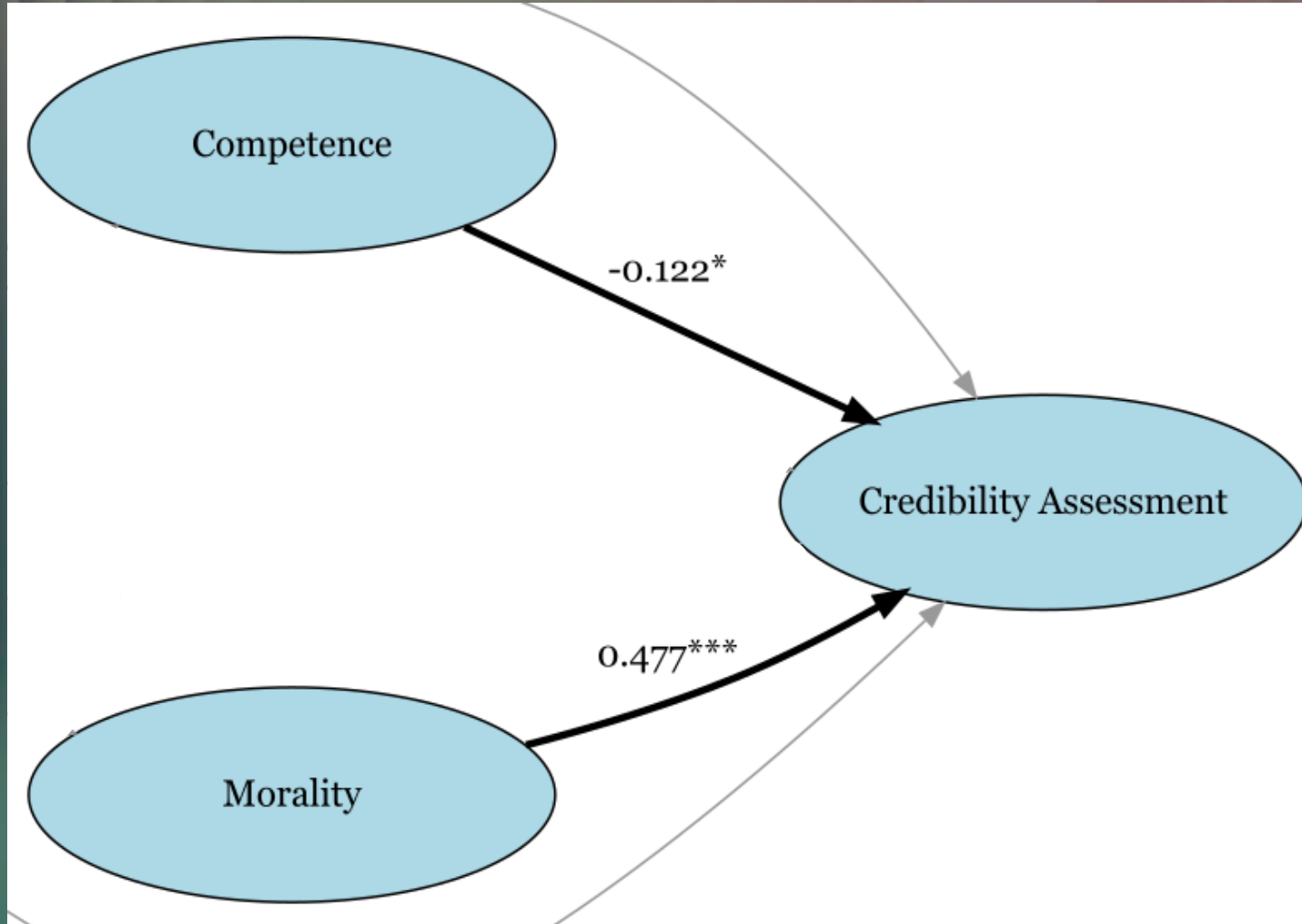
Mean ratings of key variables

Measure (1-9)	Gay (n = 190)	Lesbian (n = 193)
Warmth	5.30	5.60
Competence	5.39	5.70
Moral character	4.05	4.37
Credibility (0-100%)	61.1	63.5

Main hypothesis: no statistically significant differences



Mechanisms to stereotyping



Summary

- No clear stereotype effect found
 - Possible reasons: subtle manipulation, focus on case details
- Morality strongly boosts credibility
- Intersectionality remains crucial

Thank you for your attention!



malin.ekelund@abo.fi



[linkedin.com/company/psych-aid](https://www.linkedin.com/company/psych-aid)

