



Medegefinancierd door
de Europese Unie

CREDIBILITY ASSESSMENT

Malin Ekelund she/her
Doctoral Researcher
Department of Psychology
Åbo Akademi University

Shaping Tomorrow: Queer
Asylum in Europe Conference
2025-11-21



Medegefinancierd door
de Europese Unie

Stereotype Congruency in Credibility Assessments of Sexual Minority Asylum Claims

Malin Ekelund she/her

Supervisors: Jan Antfolk, Jenny Skrifvars, Hedayat Selim



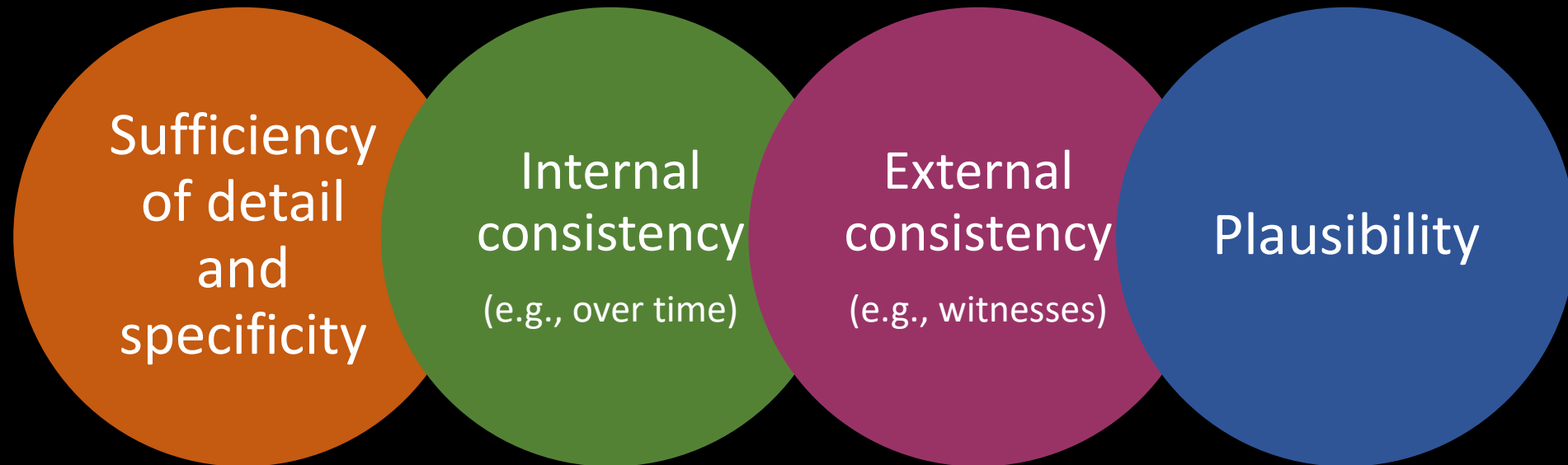
[Psych-AID] Psychology at the Frontiers: Asylum Interviewing and Decision Making

- Our overall aim is to explore ways to develop the interview procedure and the credibility assessments to ensure fair and accurate asylum procedures.
- <https://sites.abo.fi/psych-aid/>



Credibility assessment

The UNHCR recommends using 4 credibility indicators:



Credibility assessment



Medegefinancierd door
de Europese Unie

”Is this person a ‘genuine’
SOGIE applicant?”





Credibility of SOGIE: from behavior (e.g., sexual) to identity (e.g., inner journey)



Medegefinancierd door
de Europese Unie

- Western notions of identity → Applicants often expected to fit Western ideas of what it means to be SOGIE.
- Examples of expectations → E.g., Pride participation, being 'out and proud,' medical transition.
- Stereotypes → Credibility still shaped by stereotypes of how SOGIE people 'should' look or act.



An experimental test of
stereotype congruency in
credibility assessments of sexual
minority asylum claims



Preprint

Private file



An Experimental Test of Stereotype Congruency in Credibility Assessments of Sexual Minority Asylum Claims

September 2025

DOI: [10.31234/osf.io/acwp3_v1](https://doi.org/10.31234/osf.io/acwp3_v1)

License · [CC BY 4.0](https://creativecommons.org/licenses/by/4.0/)

Lab: [Jan Antfolk's Lab](#)

 Malin Ekelund ·  Jenny Skrifvars ·  Hedayat Selim ·  Jan Antfolk

Preprints and early-stage research may not have been peer reviewed yet.

Main hypothesis

1. Stereotype hypothesis: SOGI asylum seekers who fit stereotypes = judged more credible.

Specifically, we expected feminine-presenting gay men and masculine-presenting lesbians to be rated as more credible than their gender-conforming counterparts.

Why study stereotypes?

- Stereotypes are already shaping credibility judgments in asylum decisions
- What we don't know is how they influence judgments in practice
- Experimental methods let us isolate and measure these effects
- The goal is not to reinforce stereotypes, but to reveal their impact





Stereotypes: mechanisms and individual factors



Medegefinancierd door
de Europese Unie

Asylum seekers:

Warmth,
competence,
moral character

Participants:

Social dominance
orientation (SDO)



How stereotypes shape credibility judgments



Medegefinancierd door
de Europese Unie

- **Hypothesis 2a — Trait perception:**
Warmth, competence, and especially moral character predict credibility.
- **Hypothesis 2b — Mediation:**
These traits may explain why stereotypes affect credibility.
- **Hypothesis 3 — Individual differences (SDO):**
People more comfortable with inequality rely more on stereotypes.



Participants and procedure

- 383 participants from the UK from Prolific, an online platform
- Acted as mock asylum officials
- Made a credibility assessment of one SOGIE asylum seeker
- Rated the asylum seeker on perceived warmth, competence, and moral character
- Their own beliefs about group hierarchies (SDO)



Experimental design



Sexual orientation	Stereotypical	Not stereotypical	Regions
Gay men	Feminine gay man	Masculine gay man	Middle East
	Feminine gay man	Masculine gay man	Latin America
	Feminine gay man	Masculine gay man	Africa
Lesbians	Masculine lesbian	Feminine lesbian	Middle East
	Masculine lesbian	Feminine lesbian	Latin America
	Masculine lesbian	Feminine lesbian	Africa

= 12 different conditions

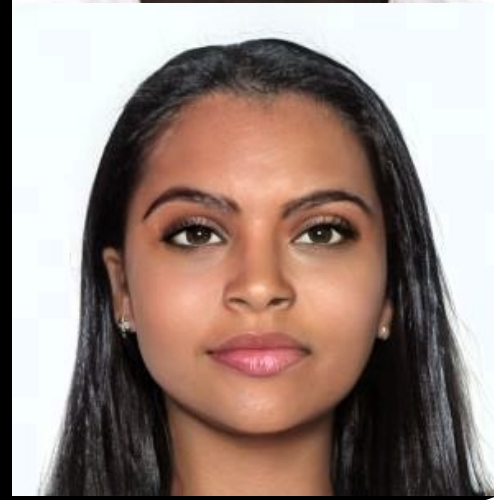
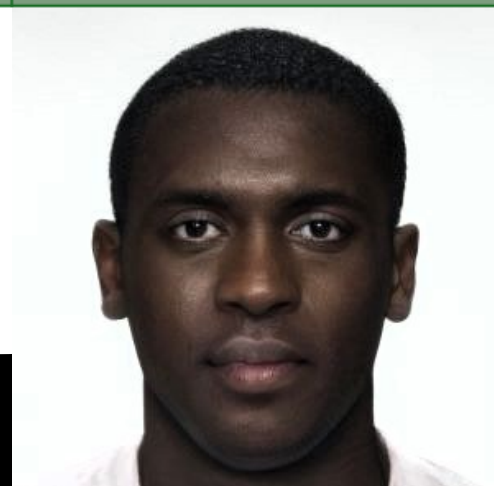


AI-manipulated images



Medegefinancierd door
de Europese Unie

Sexual orientation	Stereotypical	Not stereotypical	Regions
Gay men	Feminine gay man	Masculine gay man	Africa
Lesbian	Masculine lesbian	Feminine lesbian	Latin America



At his asylum interview, D testified as to the following:

He grew up in a small town in a Middle Eastern country. He always felt different from other boys, even as a young child. He preferred playing with girls. He recalls first being sexually attracted to other boys starting around age 12, but he was too scared to act on those feelings. When he was 17, he was approached by an older boy in the neighborhood, who was rumored to be gay. They had a sexual relationship in secret, which continued on and off for about four months. D's mother became suspicious and confronted him and D admitted that he thought he was gay. The mother responded that she was not surprised and had always suspected this. She told D that he must be careful and hide this while he lived at home - especially from his father, a senior police officer who scorned homosexuals. She told him that maybe things could be different when he left their town for university. He broke off his secret relationship and even agreed to date a female friend of his cousin - though that did not last long.

Same casefile for all 12 conditions

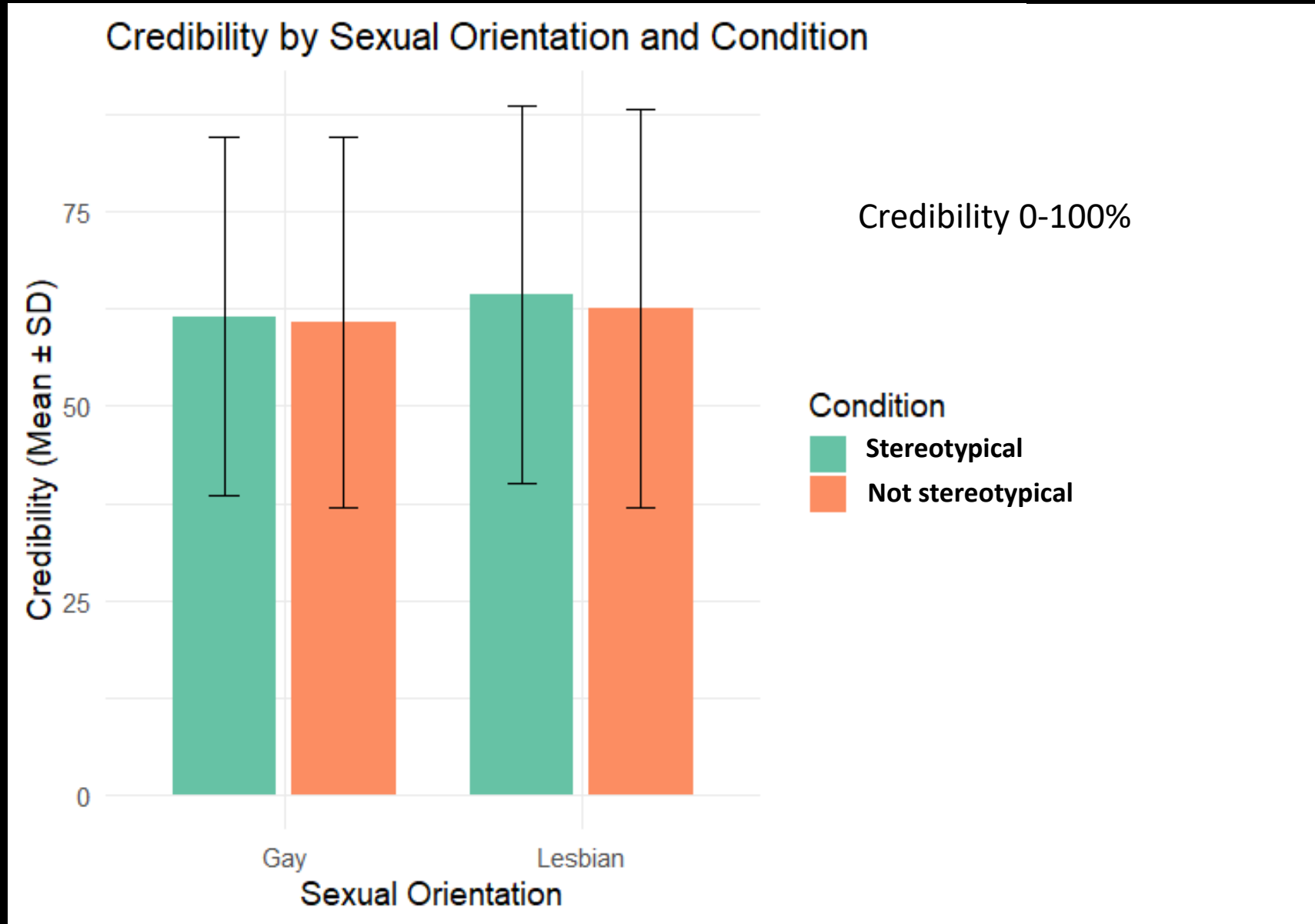


Mean ratings of key variables

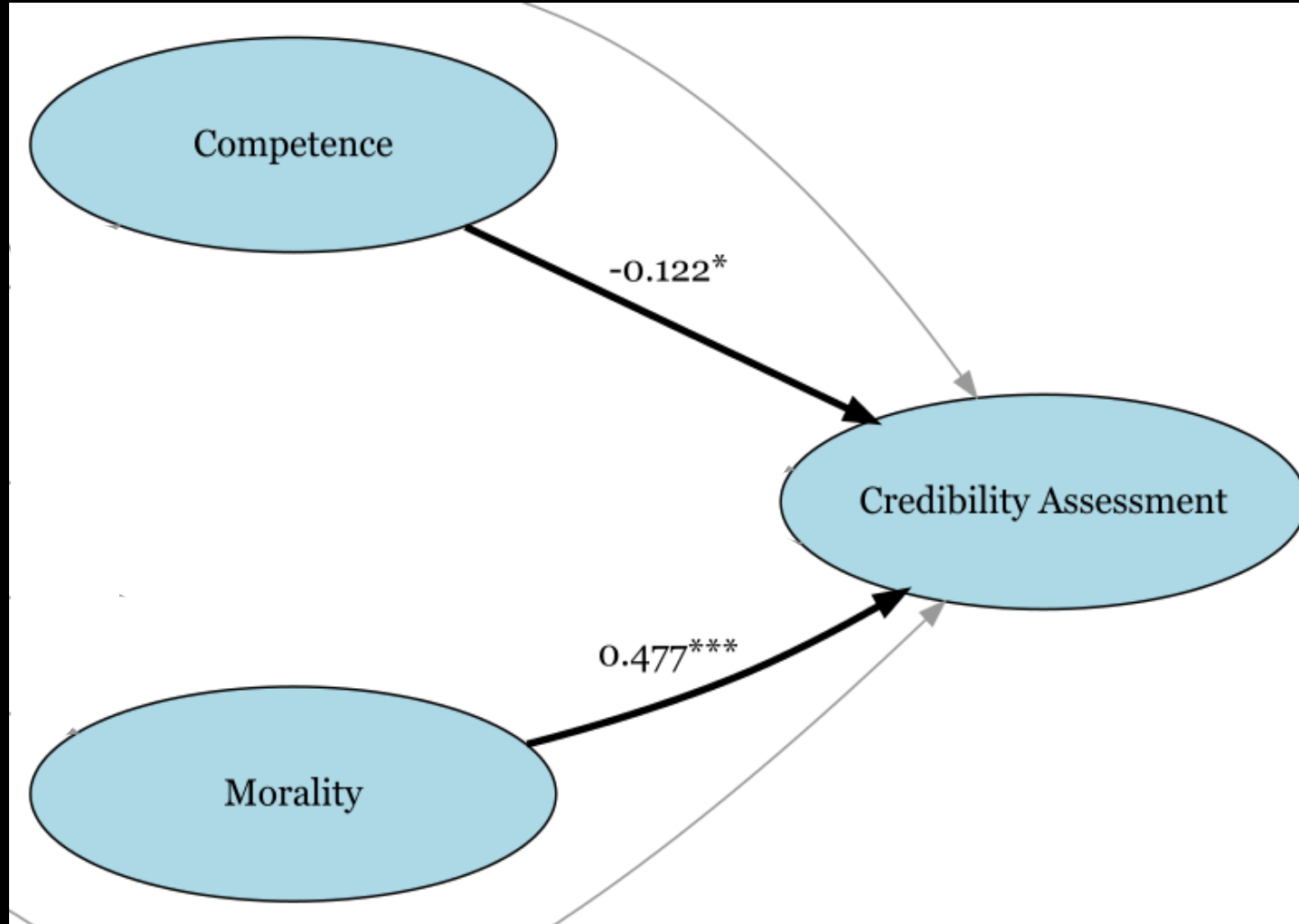
Measure (1-9)	Gay (n = 190)	Lesbian (n = 193)
Warmth	5.30	5.60
Competence	5.39	5.70
Moral character	4.05	4.37
Credibility (0-100%)	61.1	63.5



Main hypothesis: no statistically significant differences



Mechanisms to stereotyping



Summary



Medegefinancierd door
de Europese Unie

- No clear stereotype effect found
- Possible reasons: subtle manipulation, focus on case details
- Intersectionality remains crucial





Qualitative findings

Credibility assessment reasoning



“Although I could see all of the inconsistency/forgeries in D's application I did feel she explained the reason why she did these things in a credible way and that lead me to believe she really was a lesbian who was scared to return to her home.” (Woman, 54)

“There are many inconsistencies in her story when it comes to establishing whether she is actually homosexual. There is also a history of lying and created fraud documents. All this together does not make her story very credible.” (Man, 50)



Thank you for your attention!



malin.ekelund@abo.fi



[linkedin.com/company/psych-aid](https://www.linkedin.com/company/psych-aid)



Psychology at the Frontiers: Asylum Interviewing and Decision Making [Psych-AID]